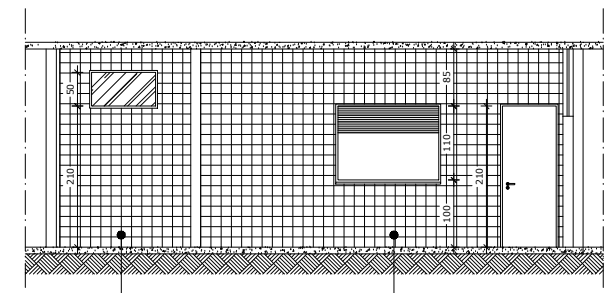
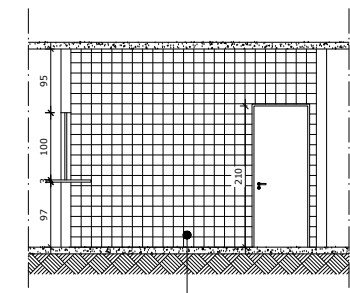


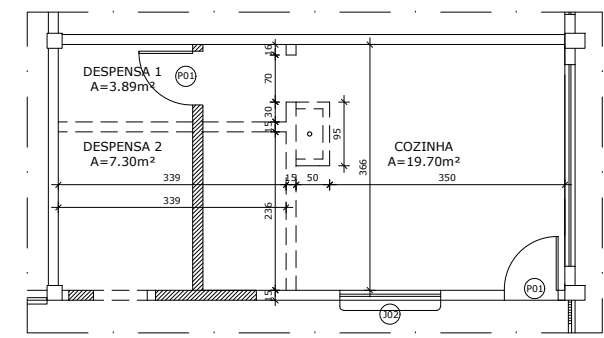
COZINHA
ESC. 1/50



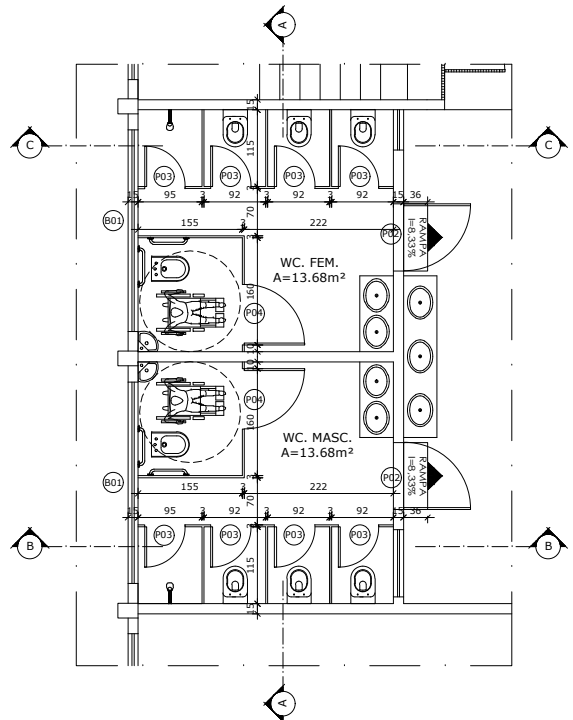
CORTE A
ESC. 1/50



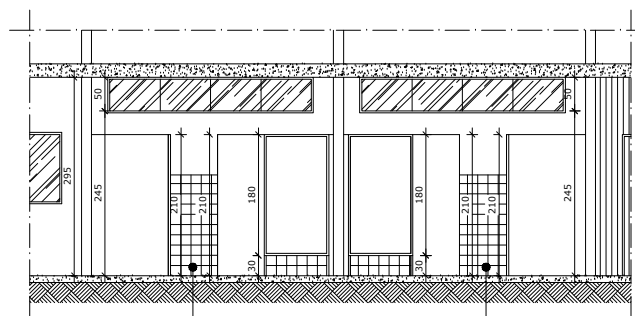
CORTE B
ESC. 1/50



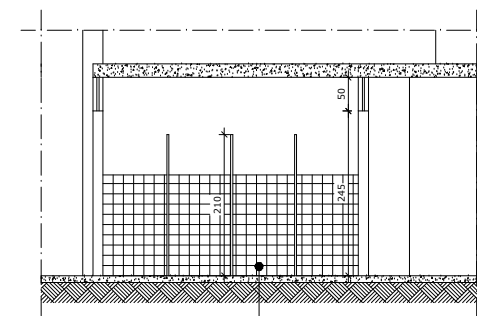
DEMOLIR E CONSTRUIR
ESC. 1/50



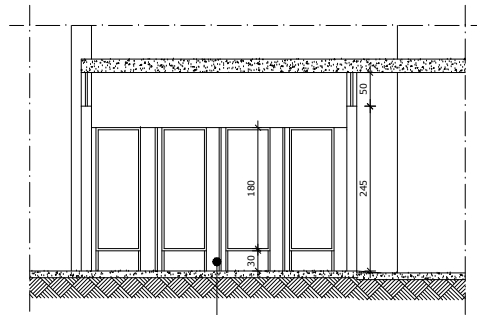
BANHEIROS
ESC. 1/50



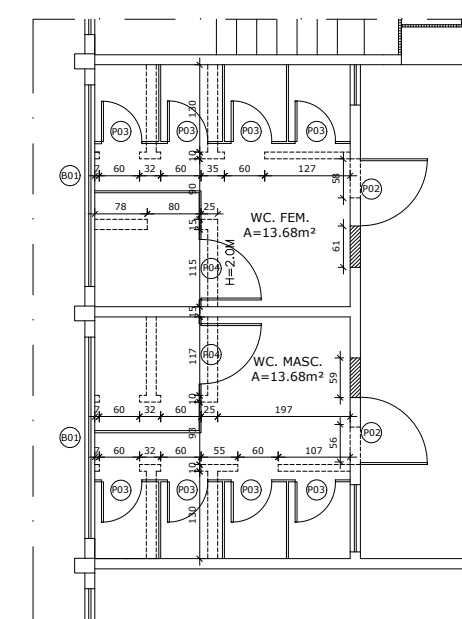
CORTE A
ESC. 1/50



CORTE C
ESC. 1/50



CORTE B
ESC. 1/50



DEMOLIR E CONSTRUIR
ESC. 1/50

NOTA 01: TODAS AS COTAS EM CENTÍMETROS.
NOTA 02: CONFERIR MEDIDAS NO LOCAL.



| | | | |
|---|-----------------------|--|-------------------------|
| PROJETO ARQUITETÔNICO: EMEF DR UBALDO RAMALHETE | | CONTEÚDO: PLANTA BAIXA, DETALHAMENTO, PLANTA DEMOLIR E CONSTRUIR DA COZINHA E DOS BANHEIROS | |
| LOCAL: R. NIVALDO GOMES GUIMARÃES, S/Nº - SANTA MONICA, COLATINA - ES, 29709-205 | | RESPONSÁVEL TÉCNICO: KARLA ANDRESSA BULIAN SANTOS CREA ES-011168/D | |
| PREFEITURA MUNICIPAL DE COLATINA SEMED SECRETARIA MUNICIPAL DE EDUCAÇÃO | | PROPRIETÁRIO: PREFEITURA MUNICIPAL DE COLATINA CNPJ: 27.165.729/0001-74 | |
| DATA: JUNHO/2022 | PRANCHA: 02/03 | DESENHO: NATHAN FIALHO SCHMILD | ESCALA: INDICADA |