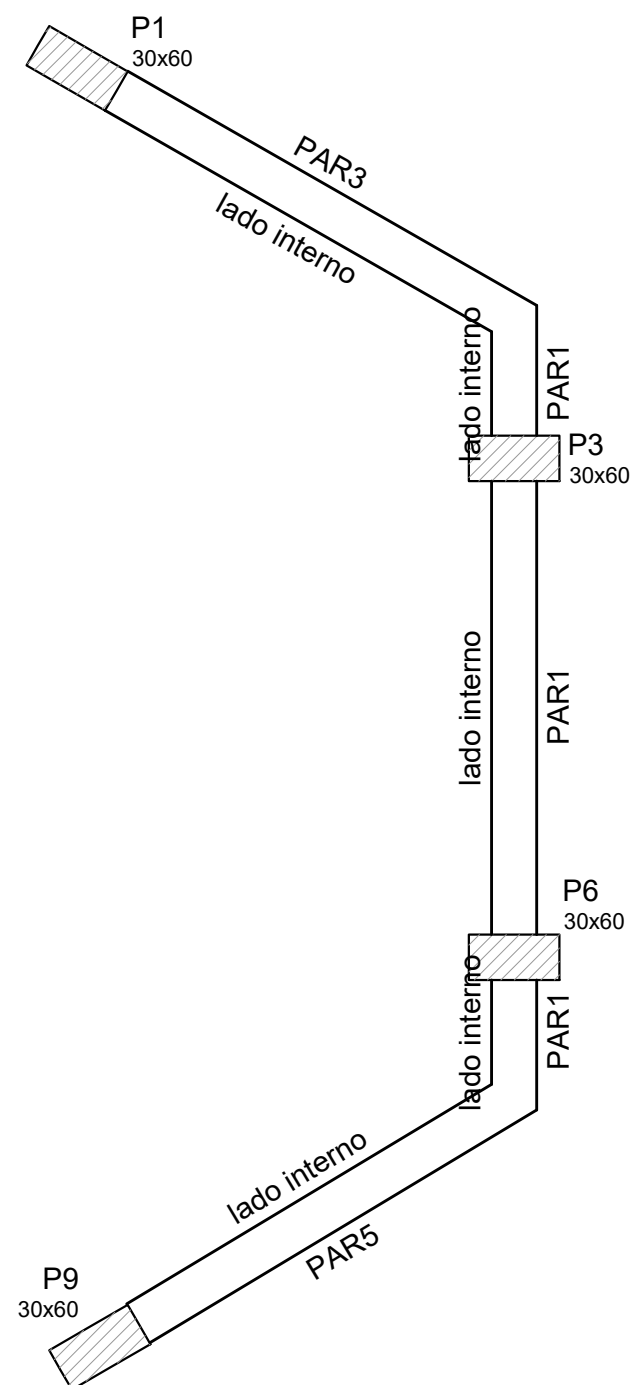
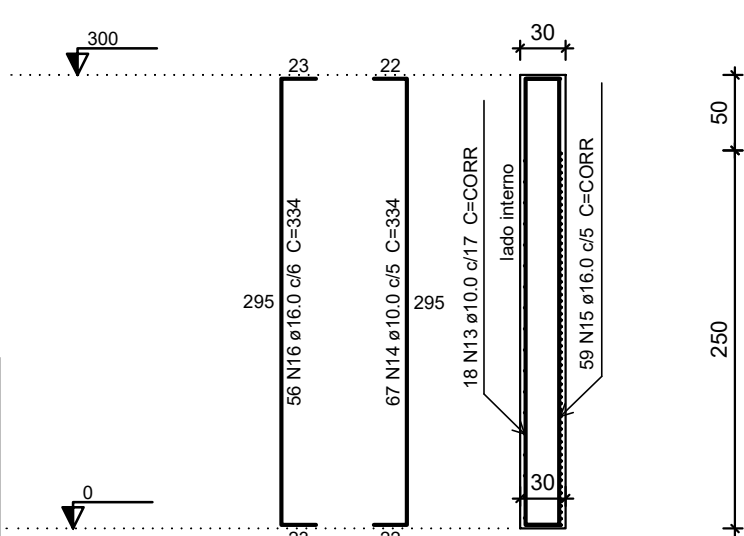


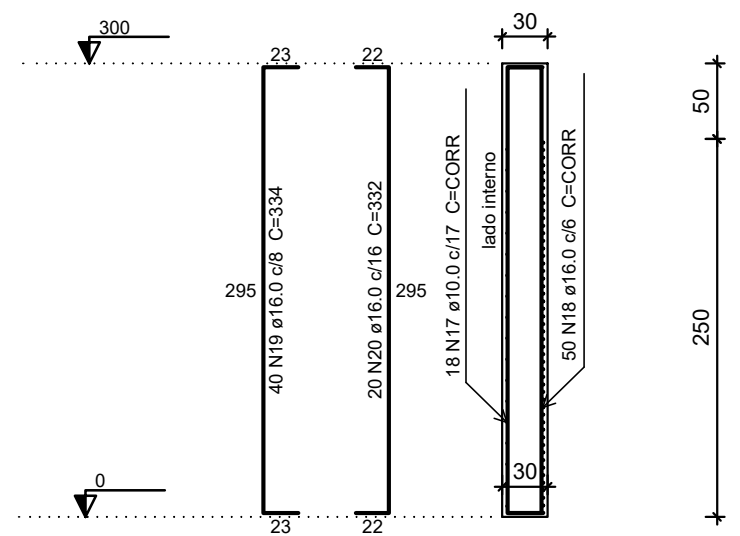
Armação positiva das lajes do pavimento TABULEIRO (Eixo Y)
escala 1:30



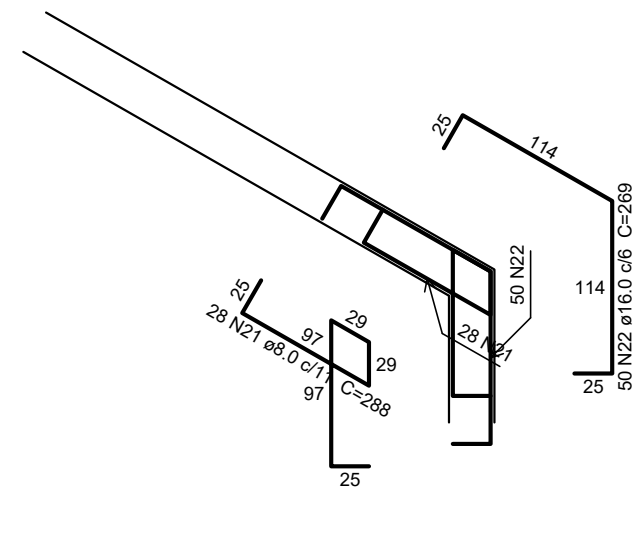
Contenções do pavimento FUNDAÇÃO
escala 1:50



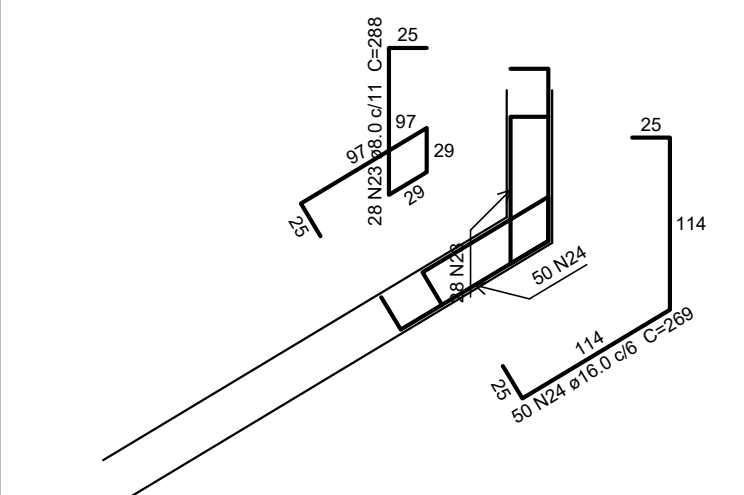
PAR4
ESC 1:50



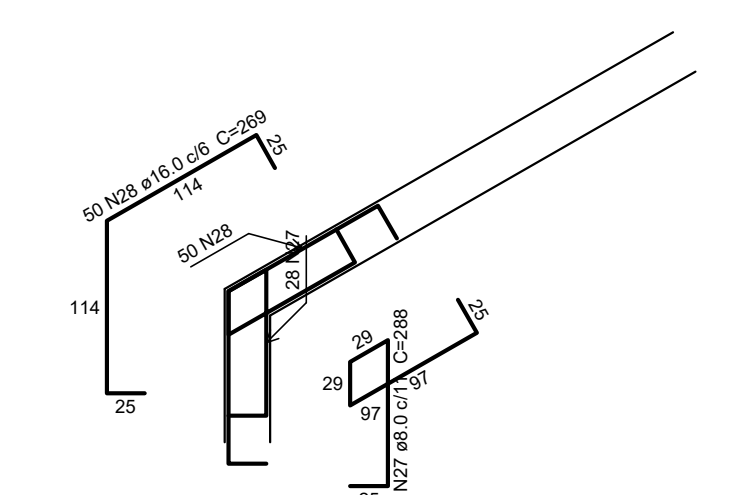
PAR5
ESC 1:50



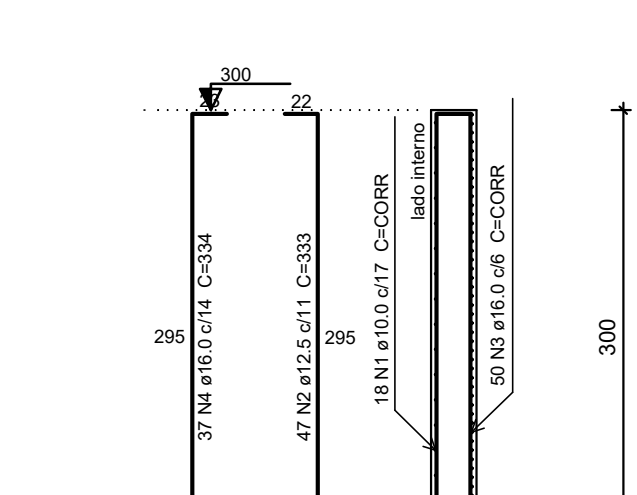
PAR1-PAR3
escala 1:50



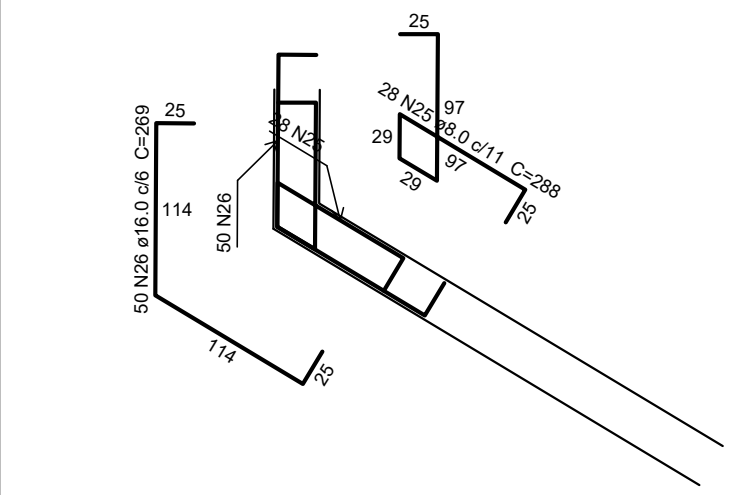
PAR1-PAR5
escala 1:50



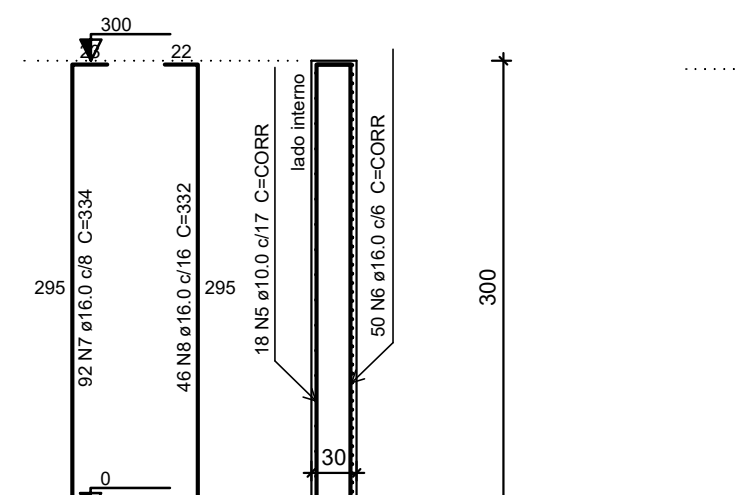
PAR2-PAR4
escala 1:50



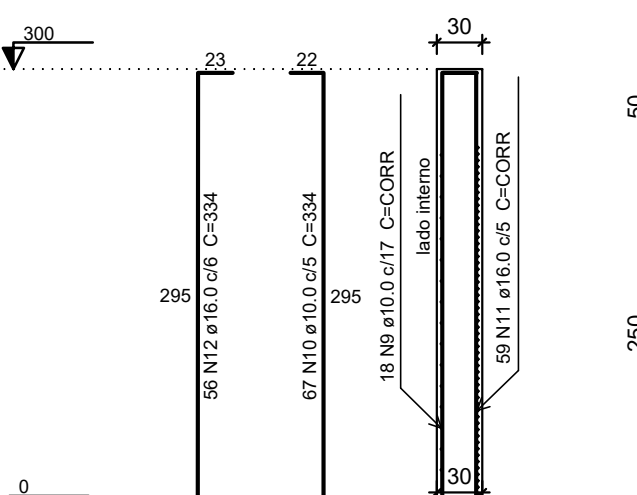
PAR1
ESC 1:50



PAR2
escala 1:50



PAR2
ESC 1:50

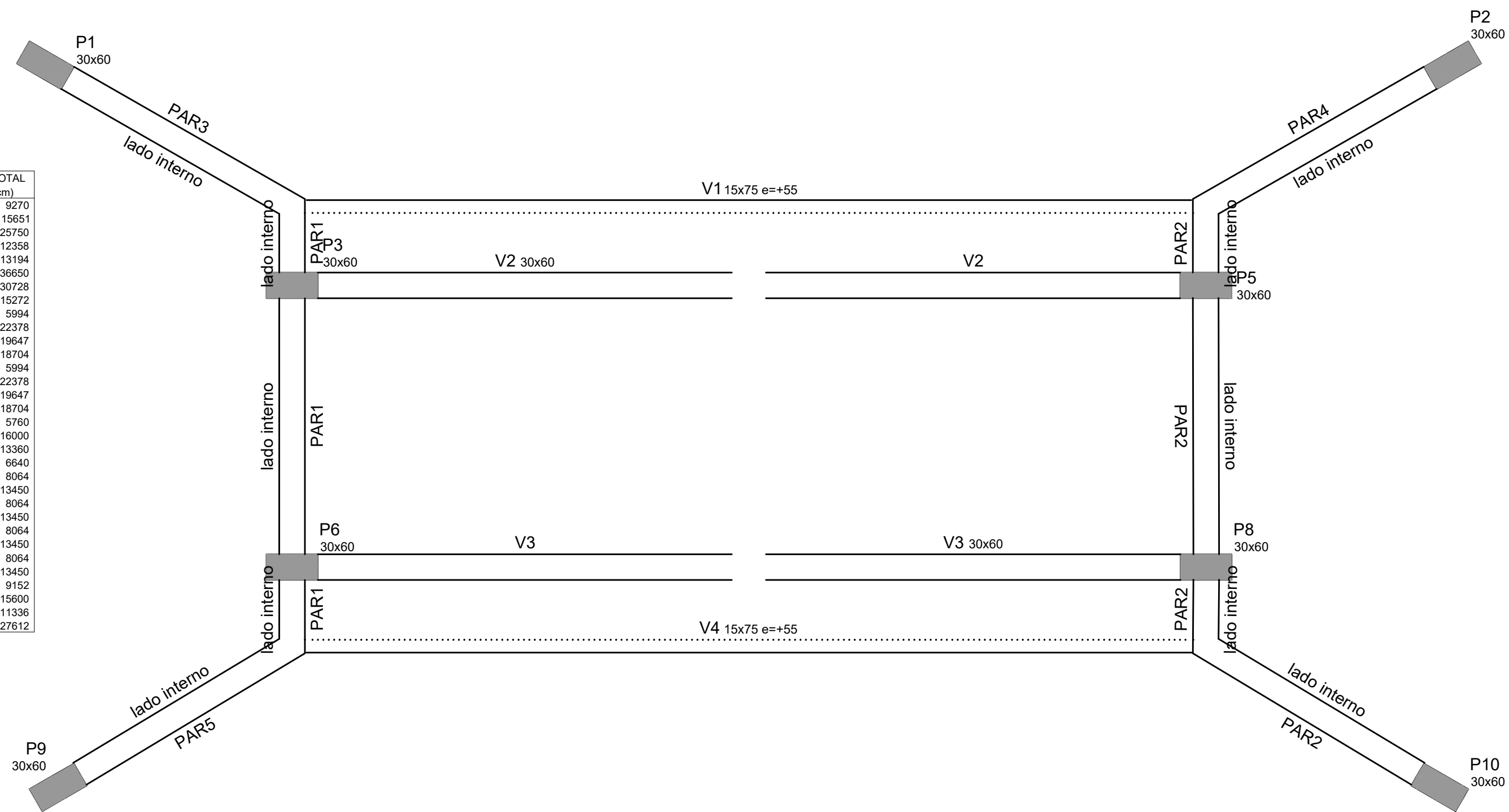


PAR3
ESC 1:50

Relação do aço						
ELEMENTO	AÇO	N	DIAM (mm)	QUANT	C-UNIT (cm)	C-TOTAL (cm)
PAR1	CA50	1	10.0	18	CORR	9270
	CA50	2	12.5	47	CORR	15651
	CA50	3	16.0	50	CORR	25750
PAR2	CA50	4	16.0	37	CORR	12358
	CA50	5	10.0	18	CORR	13194
	CA50	6	16.0	50	CORR	36550
PAR3	CA50	7	16.0	92	CORR	30728
	CA50	8	16.0	46	CORR	15272
	CA50	9	10.0	18	CORR	5994
PAR4	CA50	10	10.0	67	CORR	22378
	CA50	11	16.0	59	CORR	19647
	CA50	12	16.0	56	CORR	18704
PAR5	CA50	13	10.0	18	CORR	5994
	CA50	14	10.0	67	CORR	22378
	CA50	15	16.0	59	CORR	19647
PAR1-PAR3	CA50	16	16.0	56	CORR	18704
	CA50	17	10.0	18	CORR	5760
	CA50	18	16.0	50	CORR	16000
PAR1-PAR5	CA50	19	16.0	40	CORR	13360
	CA50	20	16.0	20	CORR	6640
	CA50	21	8.0	28	CORR	8064
PAR2-1	CA50	22	16.0	50	CORR	13450
	CA50	23	8.0	28	CORR	8064
	CA50	24	16.0	50	CORR	13450
PAR2-PAR4	CA50	25	8.0	28	CORR	8064
	CA50	26	16.0	50	CORR	13450
	CA50	27	8.0	28	CORR	8064
Positivos Y	CA50	28	16.0	50	CORR	13450
	CA50	29	4.2	104	CORR	9152
	CA50	30	4.2	50	CORR	16600
	CA50	31	6.3	104	CORR	11336
	CA50	32	12.5	78	CORR	27812

Resumo do aço			
AÇO	DIAM (mm)	C-TOTAL (m)	QUANT + 10 % (Barras)
CA50	6.3	113.4	11
	8.0	322.6	30
	10.0	849.7	78
	12.5	432.7	40
	16.0	2872.6	264
CA60	4.2	247.6	-
PESO TOTAL (kg)			
CA50	6192.5		
CA60	29.6		

Volume de concreto (C-30) = 21.03 m³
Área de forma = 147.18 m²



Contenções do pavimento TABULEIRO
escala 1:50