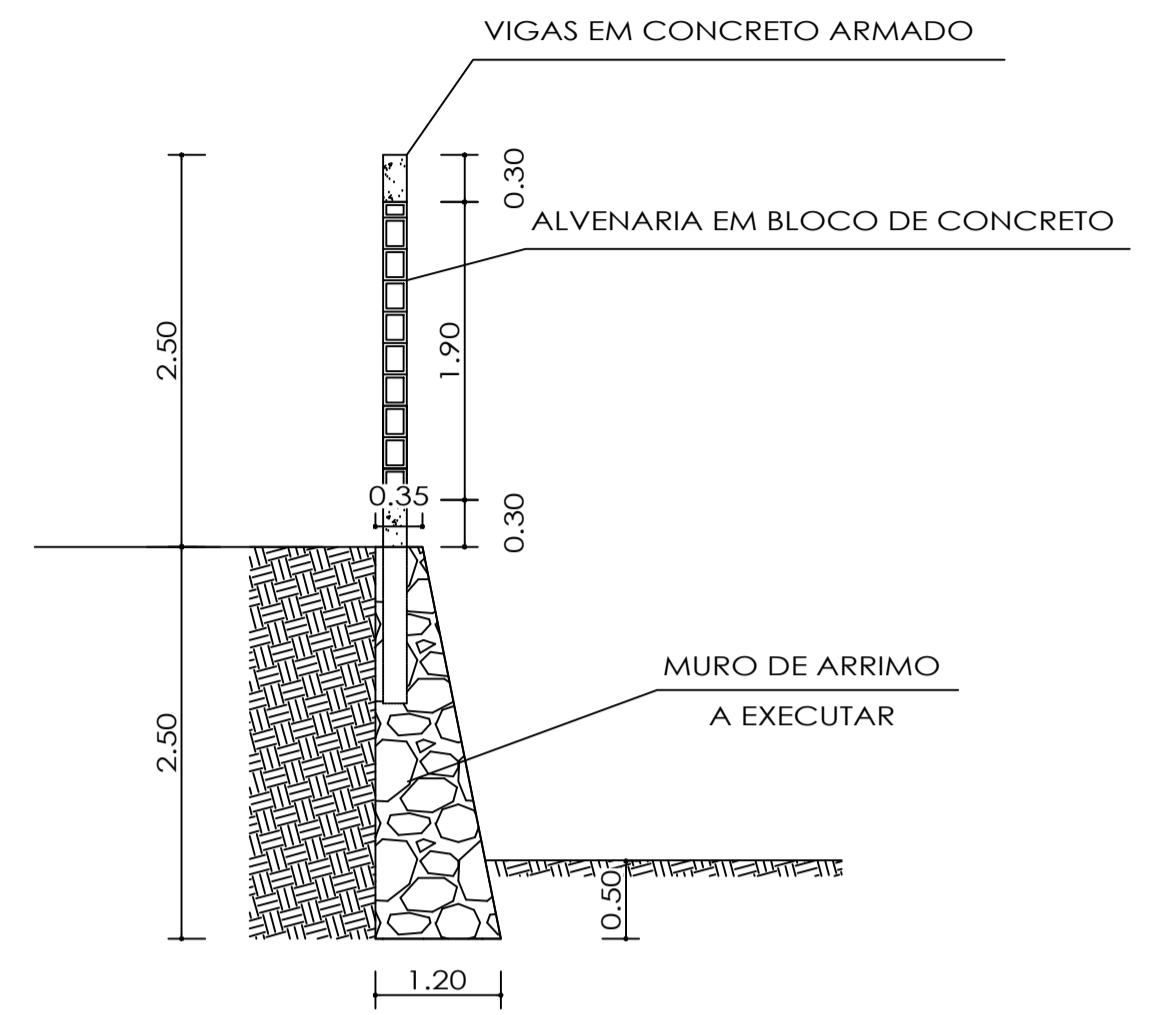
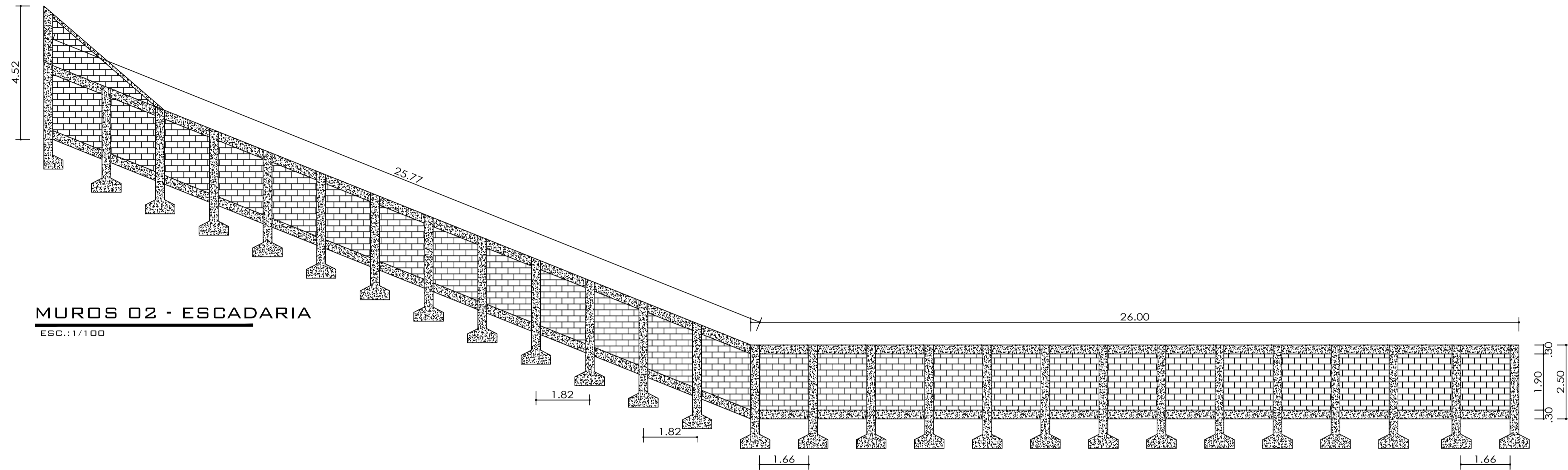


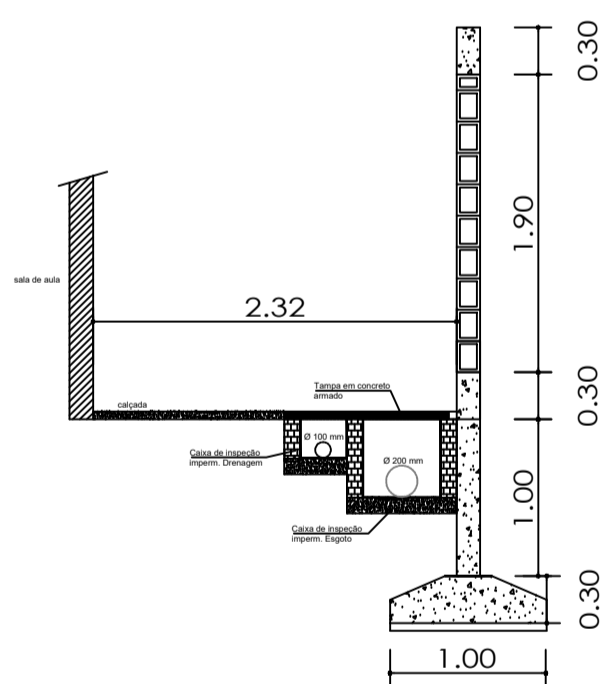
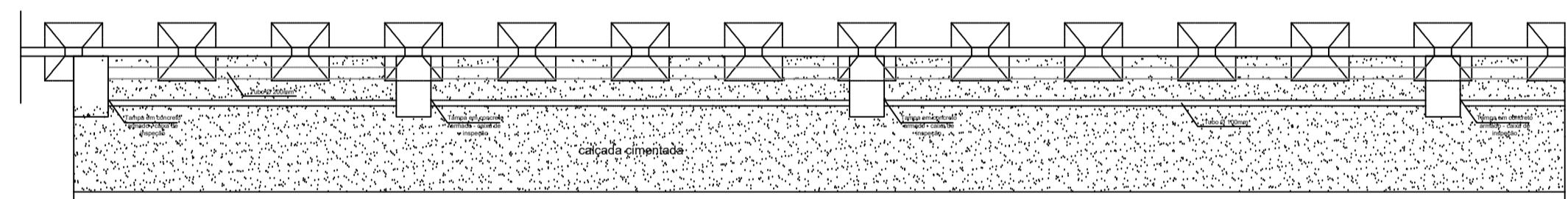
MUROS 01 - RUA DRASTO FORRECHE
ESC.: 1/100



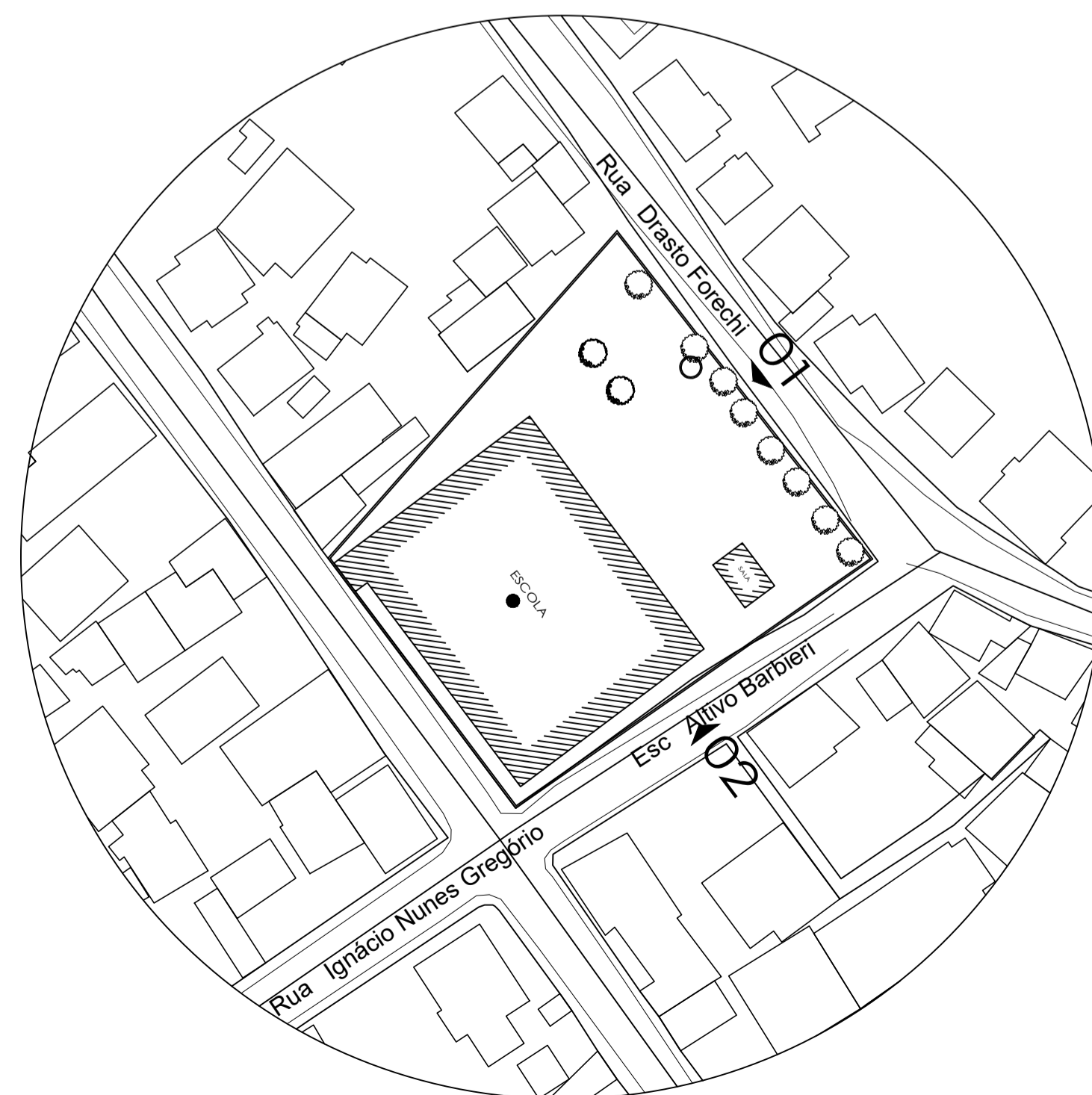
DETALHE MURO 01
ESC.: 1/100



MUROS 02 - ESCADARIA
ESC.: 1/100



DETALHE MURO/CALÇADA 02
ESC.: 1/100



PREFEITURA MUNICIPAL DE COLATINA
SEMED
SECRETARIA MUNICIPAL DE EDUCAÇÃO

EMEF "PROF. JOÃO ELIAS PANCOTO"

LOCAL:
RODOVIA DO CAFÉ, KM 08, BAIRRO CARLOS GERMANO NAUMANN, COLATINA - ES

PROPRIETÁRIO:

PREFEITURA MUNICIPAL DE COLATINA
CNPJ: 27.165.729/0001-74

RESPONSÁVEL TÉCNICO:

DOUGLAS RAMOS DEPRE
CREA ES - 011831/D

CONTEÚDO:
PLANTA BAIXA DEMOLIR E CONSTRUIR

ESCALA:
INDICADA

DATA:
SETEMBRO / 2021

DESENHO: DOUGLAS

PRANCHA:

01/01

