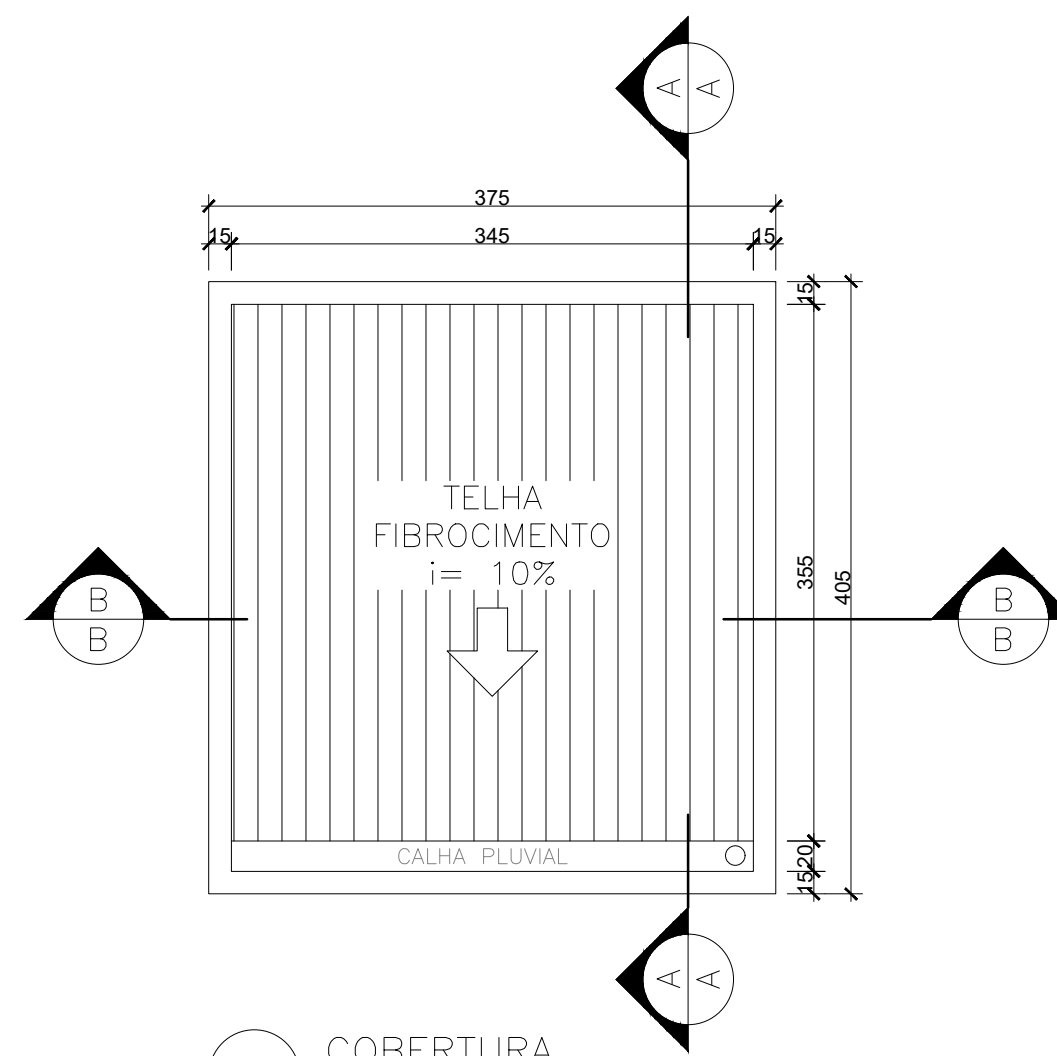
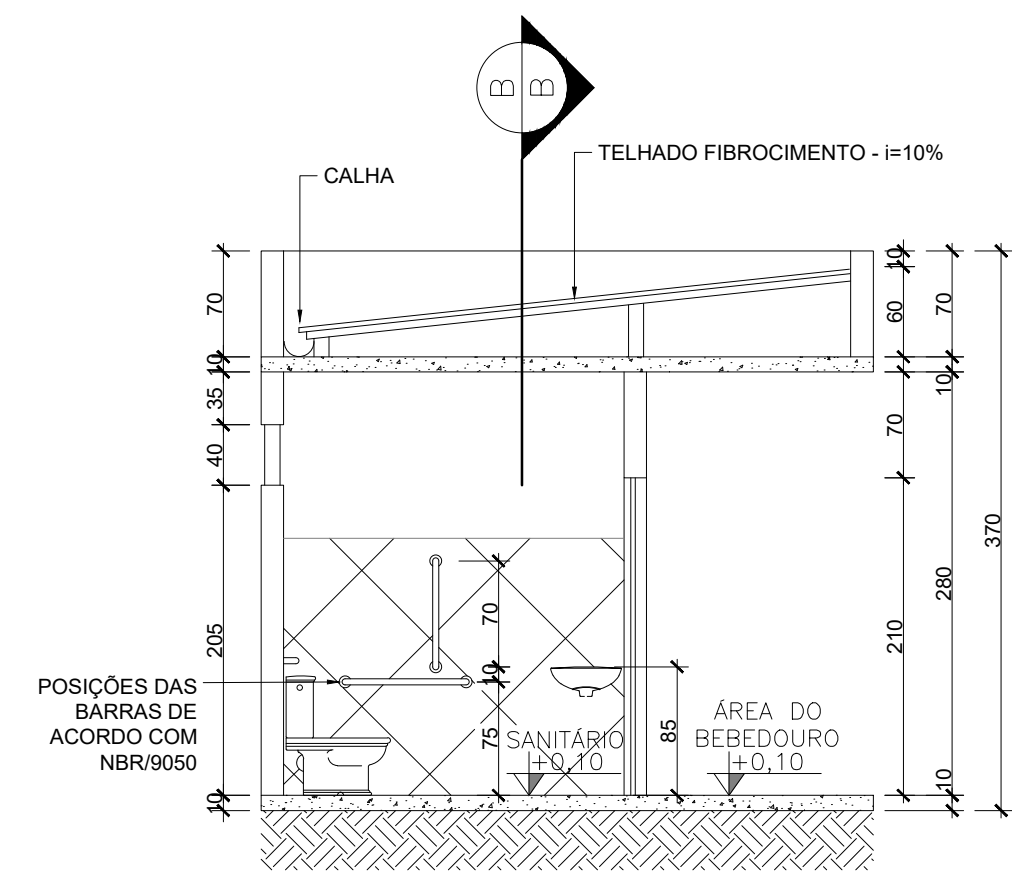


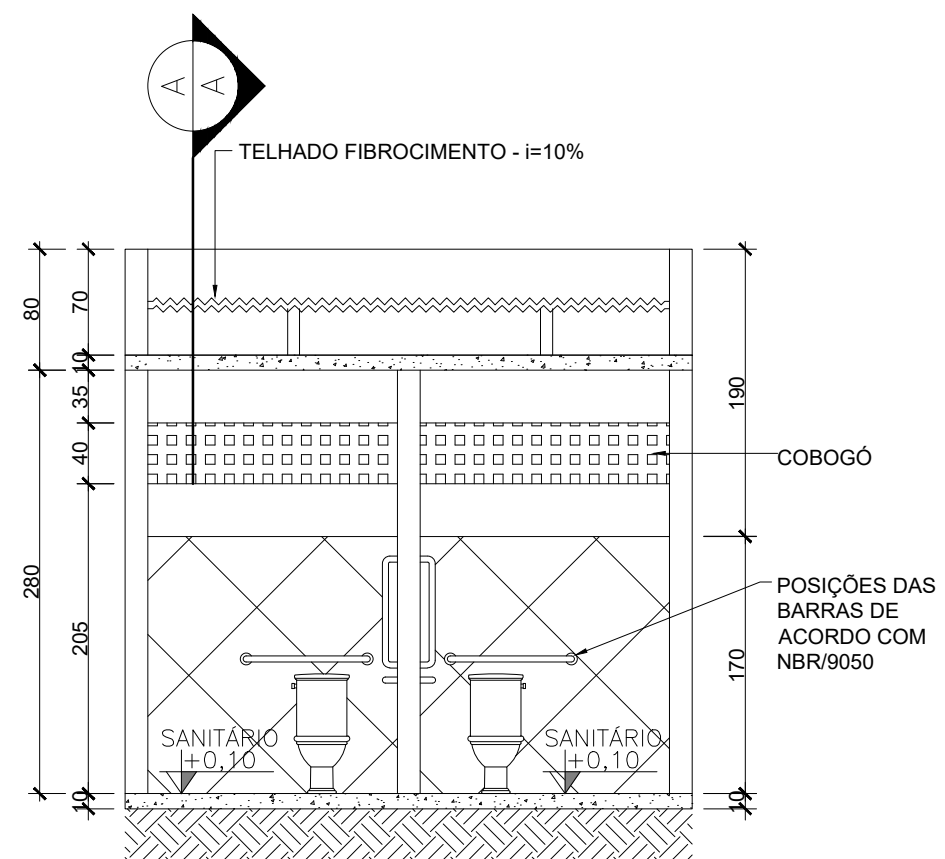
01 PLANTA BAIXA SANITÁRIOS
1/50



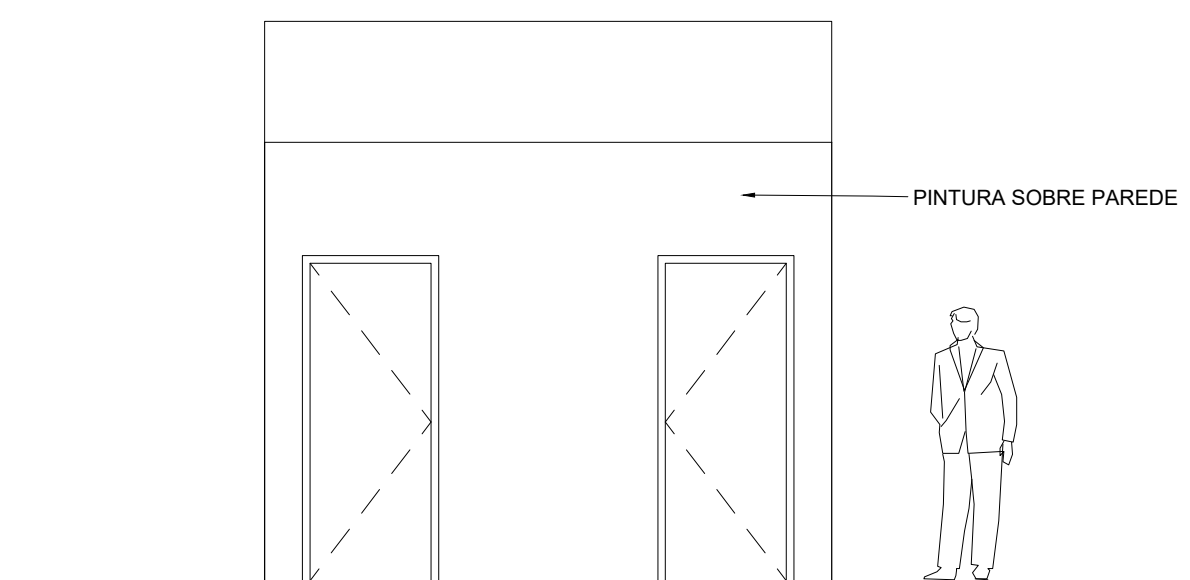
02 COBERTURA
1/50




03 CORTE AA
1/50



04 CORTE BB
1/50



05 FACHADA FRONTAL
1/50

	PREFEITURA MUNICIPAL DE COLATINA		SEMOB SECRETARIA MUNICIPAL DE OBRAS	
	PROJETO: CONSTRUÇÃO DE SANITÁRIOS		ENDEREÇO: PATRIMÔNIO DO MOSCHEM COLATINA-ES	
RESPONSÁVEL: FELIPE D. TOREZANI CREA-ES: 46116/D	ESCALA: INDICADAS	DATA: 05/2022	CONTEÚDO: PLANTA BAIXA, COBERTURA, CORTES E FACHADA	
			1/1	